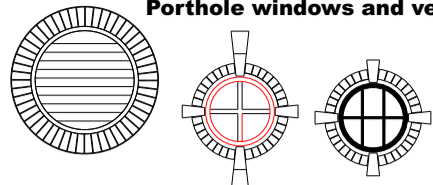
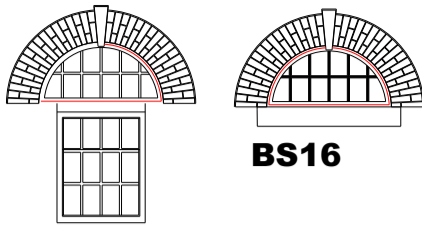


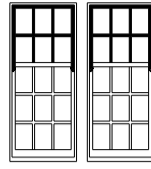
Porthole windows and vent



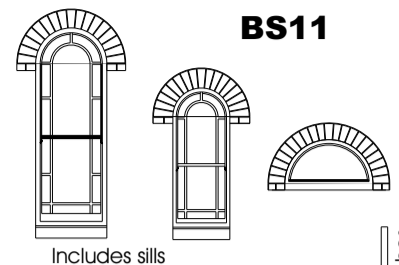
BFW16



BS16



Pair spaced

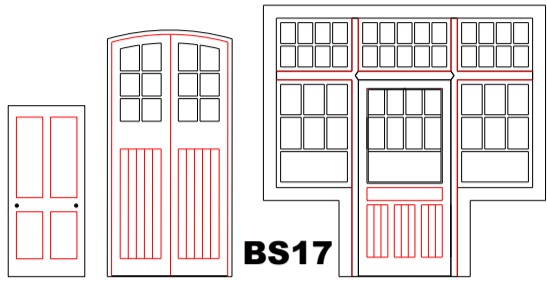


BS11

Includes sills

From Kings Norton

Scale 60 inches

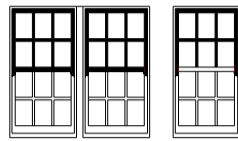


BS17

BS17

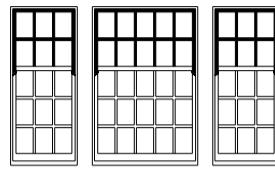
From Water Orton

Scale 60 inches

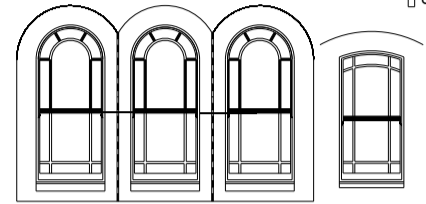


Pair spaced

BS15



Set of Three spaced

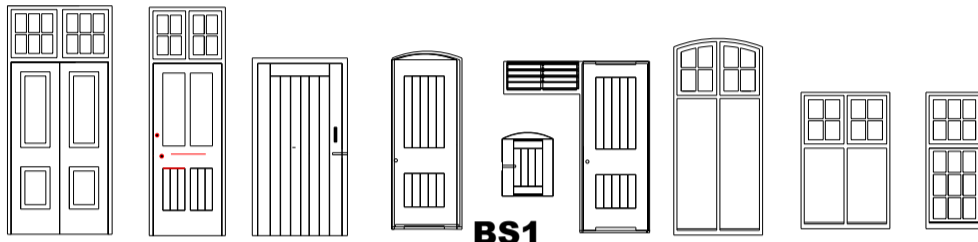


Set of three

BS12

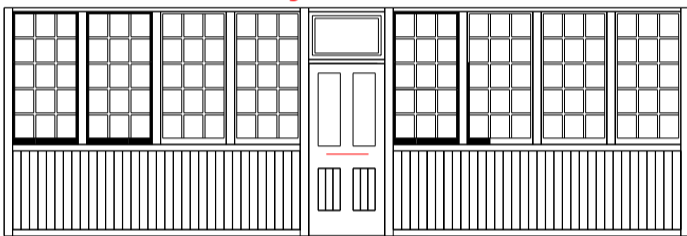
From Evesham (MR)

Railway Station Building Windows & Doors

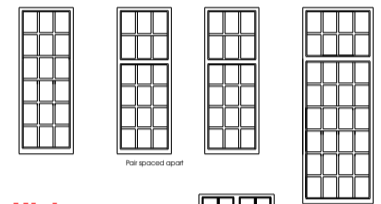


BS1

Saxby MR Station



BS2



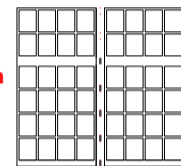
From Higham Ferrers Station

Scale 60 inches

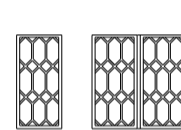


BS14

From Northfield Station (MR)

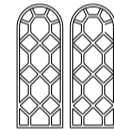


BS21



BSH3

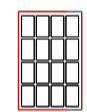
Midland Counties



BS24

Leicester to Hitchin Railway

Scale 60 inches



BS3



BS8

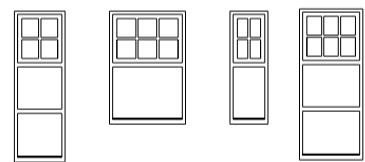


BS4

Ilkeston MR Station

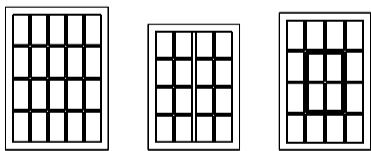
BS5

Scale 60 inches

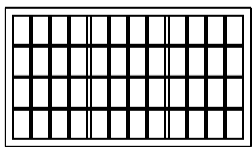


BS6

BFW2 BFW3 BFW4

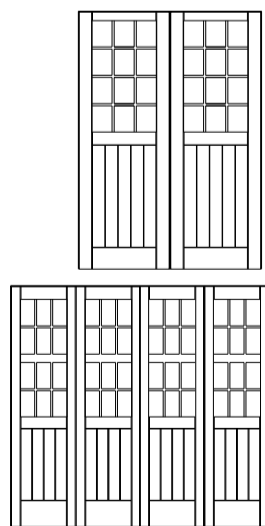
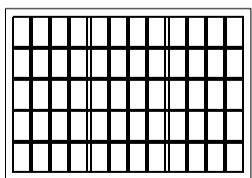


BFW5



Scale 60 inches

BFW1



BFD3

Large Factory Doors



BFD2

BFD1

Drawn by AMBIS Engineering

The Cremery Project Windows & Doors