

Notes

Reproduced from January 1964 MRN article

Includes extra Signal Box windows

Etching imagery above - blue for front half etch, red for rear half etch.

We cannot explain the shortened door bracing, but this seems to have been a fairly common feature of the ground frames construction.

Construction

Break up inner shell at rear half etched line

This will make it possible to fold up "corner posts"

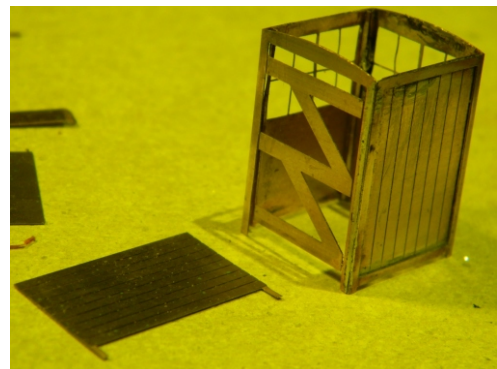
The handrails are multilayered items,

Note the handrail fitting slot in the outer shell

Additional window cills are included - use the narrower strips

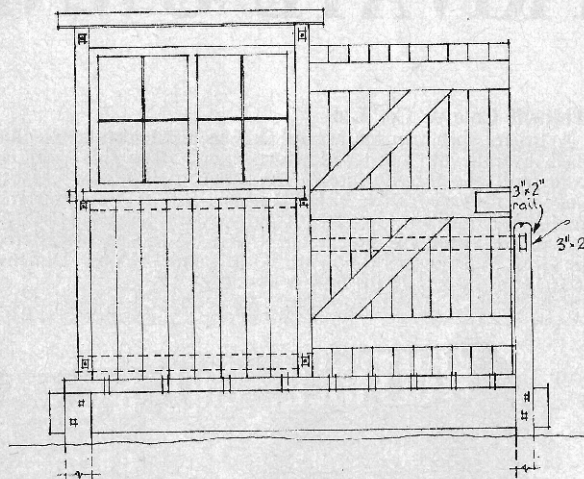
NOTE

Be careful not to distort the window parts, those illustrated have been stretched by overheating.

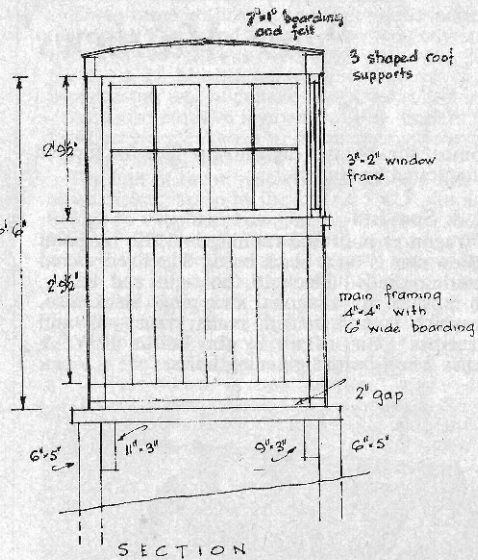


Produced by AMBIS Engineering
80 Westgate Street, Shouldham
Kings Lynn, Norfolk, Pe33 0BH

MIDLAND RAILWAY LEVER FRAME



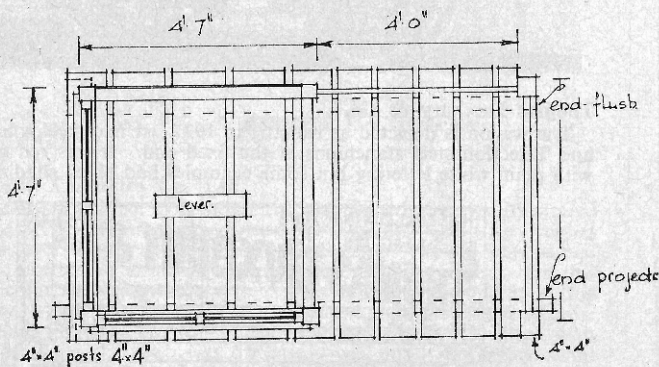
ELEVATION.



SECTION

by
CHARLES VIER

FULL SIZE FOR
O GAUGE



P L A N

THORNBURY, NEAR BRISTOL

